

Safe-Lec 2 Collectors & Shoes

Safe-Lec 2 “V-Contact” Collectors articulate to accurately track in the conductor bar groove for superior conductivity. Includes long-wearing copper graphite shoe (in holder) and shunt wires as noted below. The green “ground” (earth) collectors are available without “deflector”, or with either right-hand or left-hand deflector. Deflectors prevent the ground collector from coming in contact with adjacent phase collectors. For recommendations about choosing collectors see Appendix I, Pg. 57.

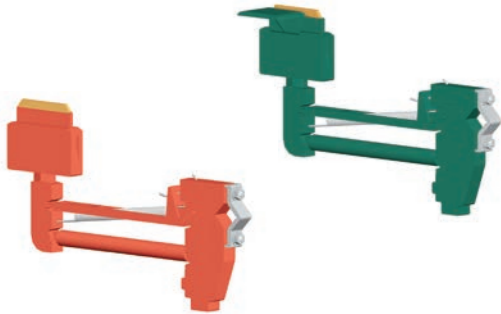
50A Collectors



Collector shoe shunt wire is integrated into the arm. Incoming cable is connected to the terminal lug at the base of the collector (maximum 8 AWG).

| TYPE | Part No. | Wt lb (kg) |
|---------------------------|---------------|-------------|
| Phase (Red) | 399360 | 0.84 (0.38) |
| Ground, w/o Deflector | 399380 | 0.85 (0.39) |
| Ground, with RH Deflector | 399373 | 0.87 (0.39) |
| Ground, with LH Deflector | 399372 | 0.87 (0.39) |

100A Collectors



Collector shoe shunt wire is integrated into the arm. Incoming cable is connected to the terminal lug at the base of the collector (maximum 2 AWG).

| TYPE | Part No. | Wt lb (kg) |
|---------------------------|---------------|-------------|
| Phase (Red) | 310990 | 1.74 (0.78) |
| Ground, w/o Deflector | 399355 | 1.74 (0.78) |
| Ground, with RH Deflector | 399340 | 1.80 (0.82) |
| Ground, with LH Deflector | 399352 | 1.80 (0.82) |

Collectors used with Pick-up Guides Only, See Pg. 20.

| | | |
|-------------|---------------|-------------|
| Phase (Red) | 310988 | 2.42 (1.09) |
| Ground | 399358 | 2.42 (1.09) |

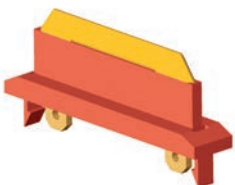
200A Collectors



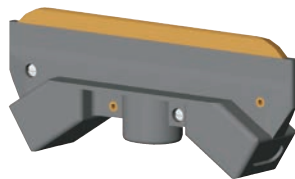
Two 2 AWG cables, 42” long, are connected to the collector shoe. Incoming cables splice directly to the shunt wires.

| Type-Color | Part No. | Wt lb (kg) |
|---------------|--------------|-------------|
| Phase (Black) | 34956 | 4.16 (1.89) |

Collector Shoe & Holder



50A / 100A Collector Shoe and Holder
310993



200A Collector Shoe and Holder
35289

| Current Rating | 50A & 100A Phase (Red) | 50A & 100A Ground (Green) | 50A & 100A with Deflector (Green) | 200A |
|----------------|------------------------|---------------------------|-----------------------------------|--------------|
| Part No. | 310993 | 399357 | 399356 | 35289 |
| Wt lb (kg) | 0.185 (0.08) | 0.07 (0.03) | 0.25 (0.11) | 0.45 (0.20) |