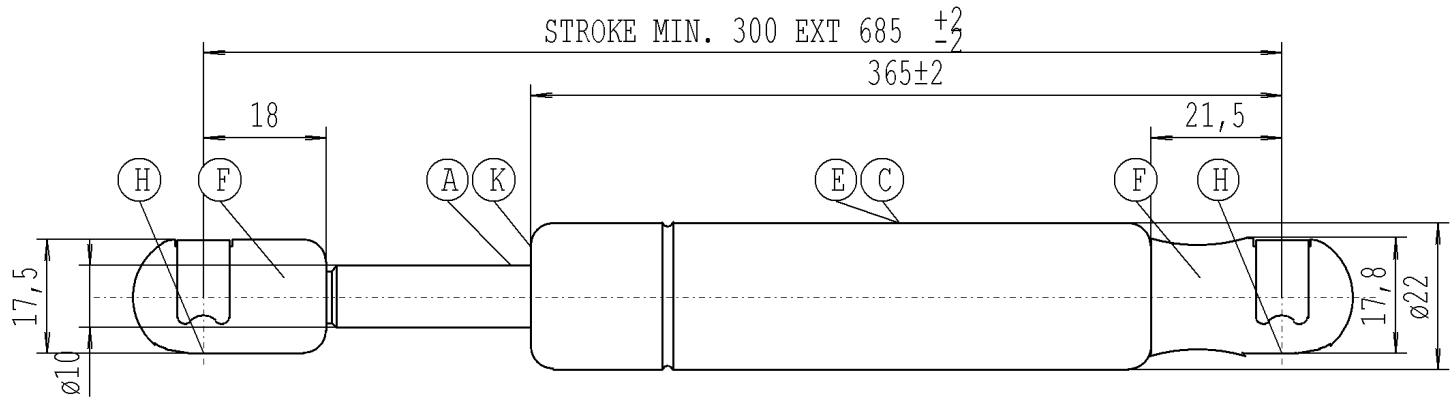


We reserve all rights to this drawing, to any patents or patent registrations related hereto, and to the duplication, retransmission by third parties and misc. use. Any use of this drawing is not permitted without the written consent of STABILUS.

Intended for internal use and customer



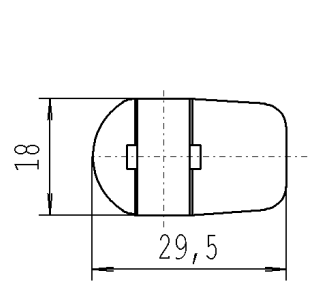
- the Gas Spring must not be mechanically modified or damaged.
- The warning label must not be removed or obscured.
- Extension speed VS2=0,2-0,5 (m/s)

- compression and extension forces measured acc. to STAB-Spec. 10009033
- Extension speed measured according to STAB-Spec. 10005451
- Spring test with piston rod downwards

- Line up connections permissible deviation ± 5 DEG
- Protect piston rod from dirt, paint and damage
- Disposal acc. to STAB-Spec.10009375
- Drawing not true-to-scale
- Observe installation instructions according to STAB-Spec. 10005593
- Ball socket to suit ball stud DIN 71803 ø10
- Disassemble ball-stud to STAB-Spec.10006399
- Permissible operating temperature range -30°C to +80°C
- Installation: With piston rod down to ensure best possible durability performance of the gas spring.

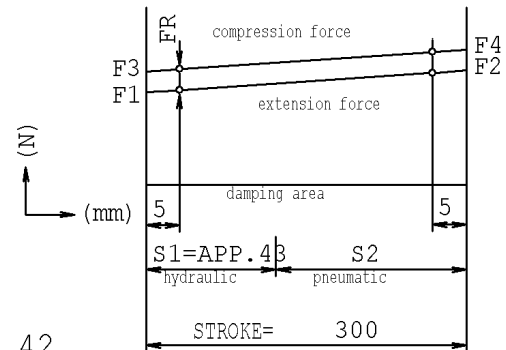
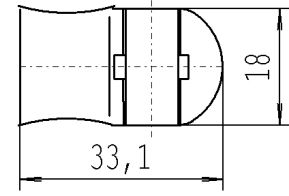
-Component testing gas spring acc. STAB-Spec. 10010035

Unregistered Copy
Print-out is not subject to the modification service



STABILUS LIFT-O-MAT

NICHT OEFFNEN HOHER DRUCK
DO NOT OPEN HIGH PRESSURE
STABILUS STANDARD



$X = F2 / F1 = 1,42$
 $FR_{max} = F3 - F1$

- A Nislid black
- C print white
- E black painted
- F Releasing torque min. 3.0 Nm
- H greased
- K border flange oiled

CHANGE	NEW
	OLD
	CHG. NO.
	NAME
	NO.

STABILUS

Modifications in favour of technical process reserved

Forces (statically measured)

F1 (N)	F4 max (N)	FR max (N)
extension force	compression force	friction
900 ±45	1490	80

DIMENSIONS WITH-
OUT TOLERANCE

+/-1

LIFT-O-MAT

03 01 1019 15 300

DRAWING CHECKED

DATE 24.07.2001 NAME SCHNASS

Document No. 10016137

753025

E