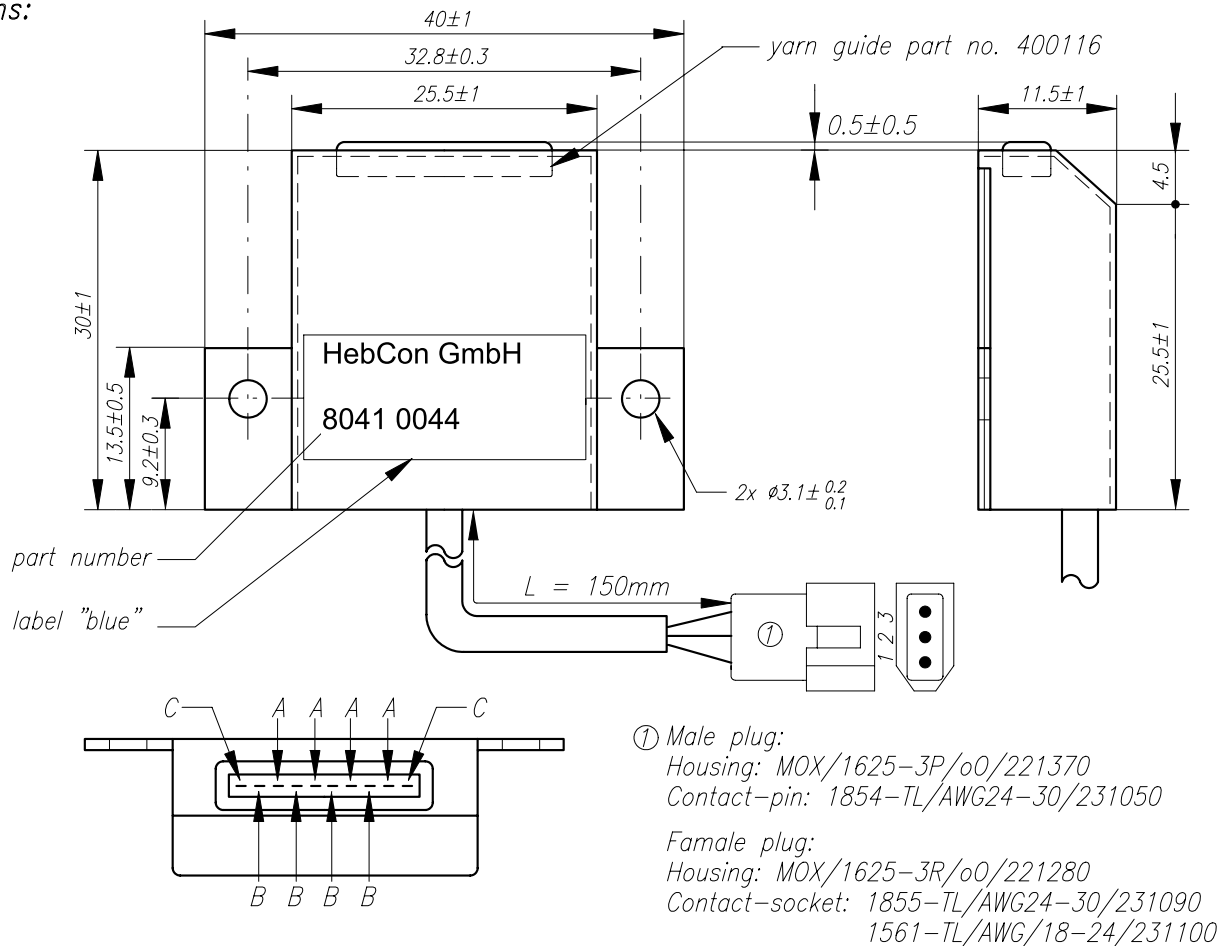
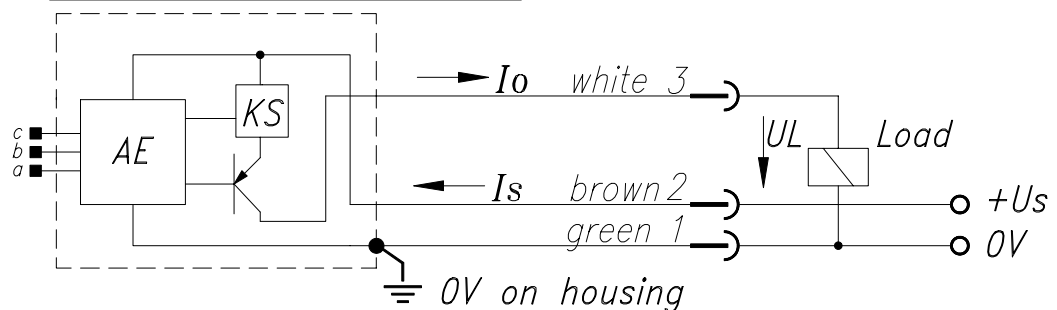


Dimensions:



Connection diagram:

without free wheeling diode!



AE = detector electronics KS = short circuit protection

Data:

- Application : Yarn detection inside suction tube of doffing robot.
- Supply voltage U_s : 24VDC \pm 25%; max. Ripple 100Hz: 20% max. Ripple 300Hz: 20%
- Supply current I_s max. : $I_o + 10$ mA
- Power ON delay t_{pon} : = tr
- Reaction time tr : tr = ca. 0.04sec. (after yarn break)
- Current I_o : yarn is running: I_o max. = 0.1 A
yarn is not running, after reaction time tr: $I_o = 0$
- Load voltage UL : UL = $U_s - 2V$
- Delay time t_d ; after the yarn begins to run: t_d max. = 0.5 sec.
- Mounting : Yarn detector must be properly grounded to the machine body by means of the mounting bracket. (Minimum cross-section of mounting bracket: 20mm x 1.5mm).

Yarn detector 8041Q 397M	drawn date/name	00.10.26 G.Schneider	article number	status
HebCon GmbH / Switzerland	designer date/name		8041'0044	06